

## Dent Station Phase 6 Progress Photos May/June 2024

1<sup>st</sup> May 2024: erect scaffolding to west elevation projection and south platform gable



Erection of scaffolding: Cumbria Kendal Scaffolding





7<sup>th</sup> May 2024: Commencement of preparation for lime repointing: Julian Wilkinson and Shamus Brown



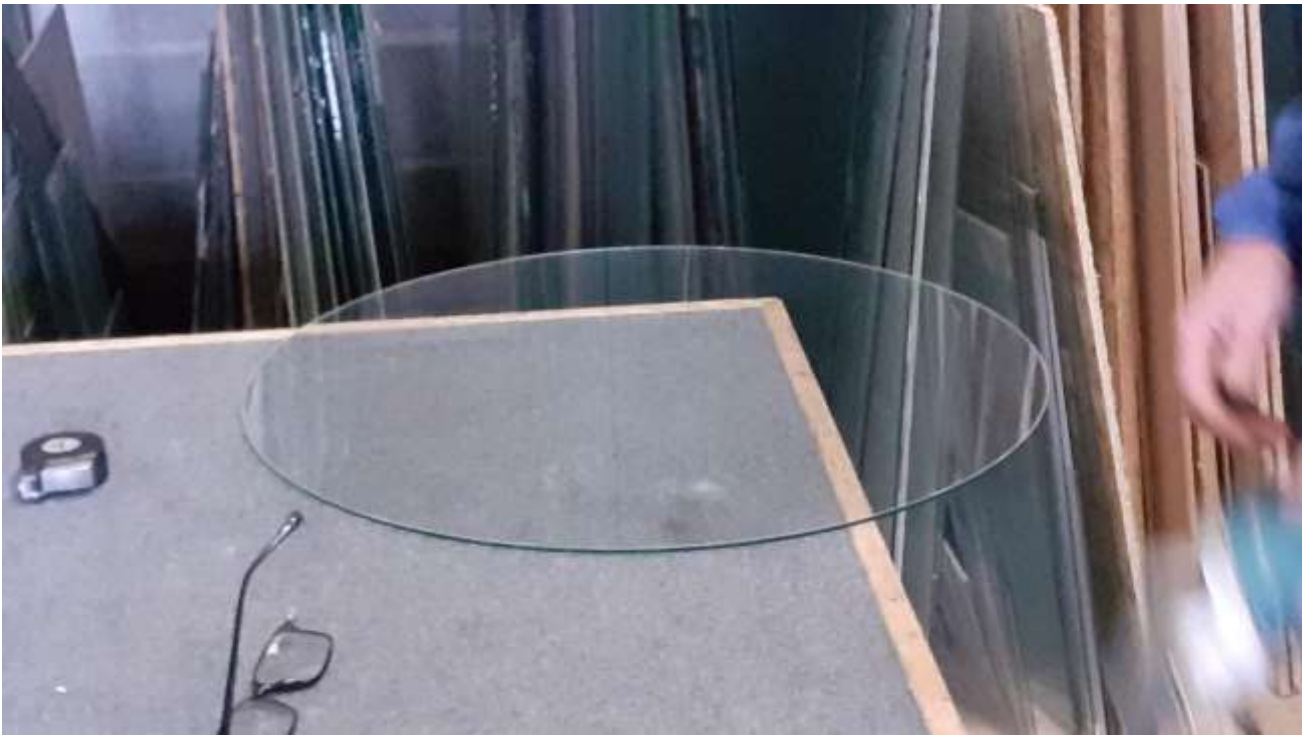
Investigation of water ingress possible cause thought to be bulls eye window at high level:



Showing possible points of ingress



The possible solution: a pane of glass (Guiseley Glass)



Cutting out joints around west window



The view from the scaffolding

16<sup>th</sup> May: pointing repairs to west elevation complete: preparation of south platform gable and w/c block ongoing: repointing of w/c block started: new drain to borehole installed (David and Will Ellison)





Manhole to borehole for water supply before drain installed: borehole head can be seen as sealed unit below the water.



Installation of land drain: David and Will Ellison



Locating existing service cables and pipes





Will and David digging out.



Installation of perforated pipe



Manhole now drained.



And finished job complete with surface water gully.



22<sup>nd</sup> May: weather extremely poor; pointing to w/c block ongoing and raking out of joints to south platform gable; painting to carpark facing windows ongoing (JC); preparation of booking hall window arch (JC)





23<sup>rd</sup> May: repointing w/c block continuing; water system serviced (Steven Graham – Cumbria Pumps)





Redecorated main bed windows.

28<sup>th</sup> May: pointing ongoing; plaster repairs and preparation of window arch ongoing (Ken)



30<sup>th</sup> May: pointing to platform gable at high level ongoing; grass trimmed (Ken); external painting two-bedroom windows and outer sashes completed.



Mixing lime mortar



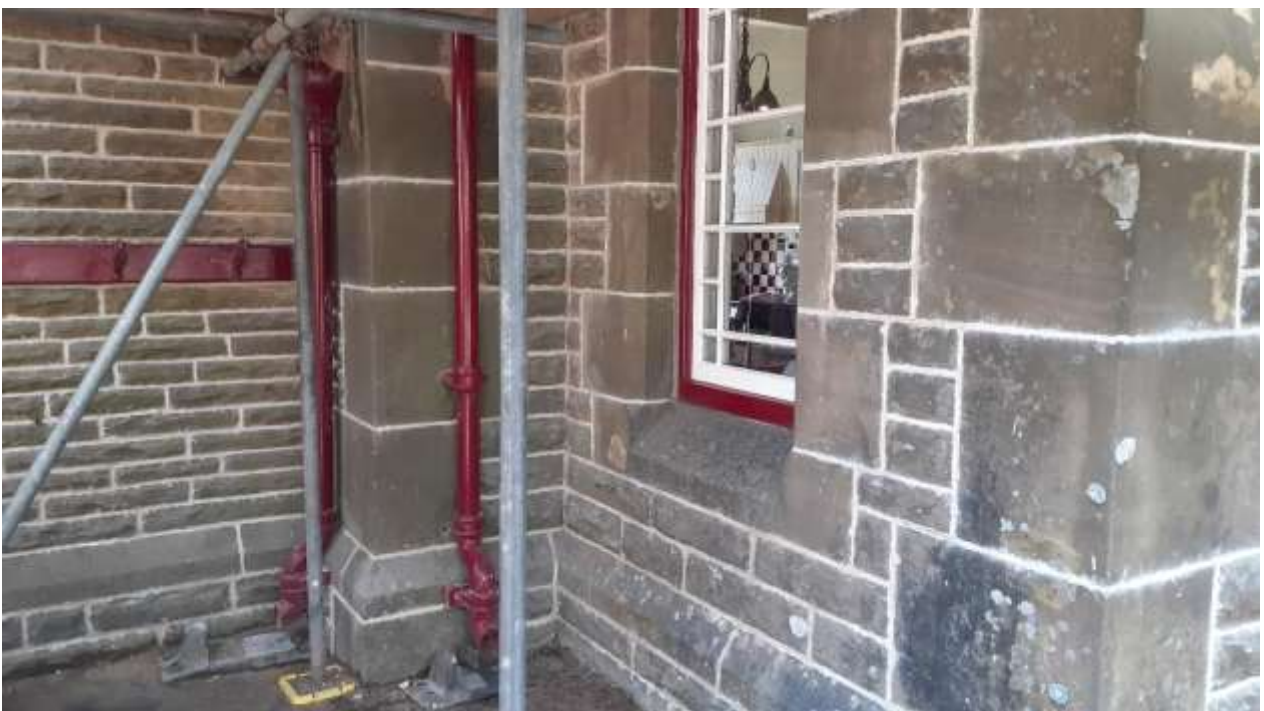
Driveway border mowed

31<sup>st</sup> May: pointing to platform gable ongoing at lower levels; preparation of two bunk room windows commenced.





10<sup>th</sup> June: pointing to south gable platform facing gable and south gable apex completed; plastering and redecoration to west window arch completed; external redecoration to windows and outer sashes completed.



11<sup>th</sup> June: repairs to west elevation pointing ongoing; weather poor.



12<sup>th</sup> June: sundry maintenance works ongoing.



And the occasional distraction

13<sup>th</sup> June: glass installed in bull's eye window as water proofing measure; missing slates refixed to w/c block roof.



14<sup>th</sup> June: final day: weather poor with heavy rain in the morning; scaffolding dismantled in morning and general clear up in the afternoon.



Final removal of the scaffolding by Cumbria Kendal at 1145



Ken refixing the station sign at 1500.

And the sun came out for a short while at 1630.



Showing completed redecorated windows (to bunk room)



